

**Powertrain Control Solutions, LLC.**

10511 Old Ridge Road www.ptcs.us (804) 227-3023  
 Ashland, VA 23005 Fax: (804) 227-3005

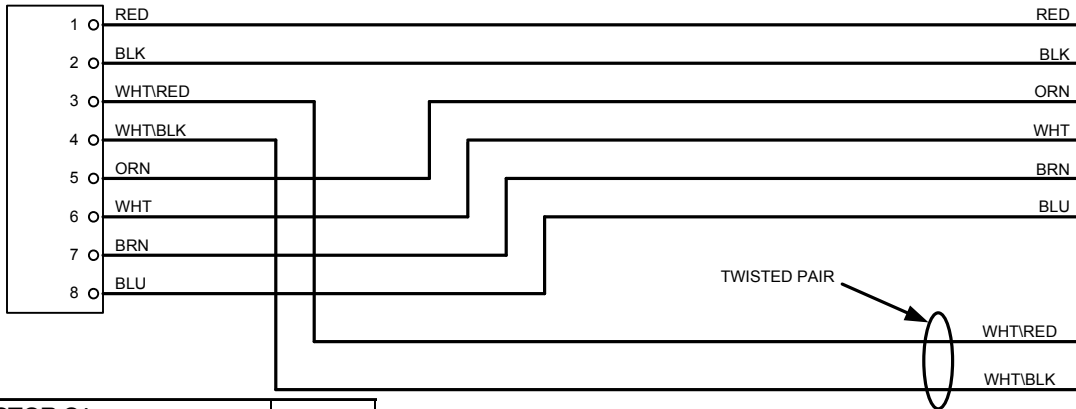
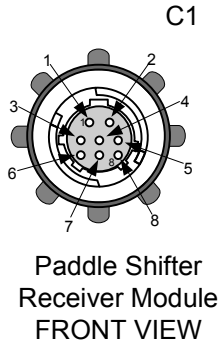
DRAWN BY: F. Dearhart DATE: 12/28/2010 PAGE: 1 OF 2

TITLE: **PADDLE SHIFTER RECEIVER -MODULE-  
 HARNESSSES-UNTERM.**

PART NUMBER: **PS-4000**

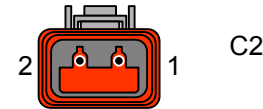
DESCRIPTION: **PADDLE SHIFTER [PCS] CUSTOMER HARNESSSES**

REV.	DESCRIPTION	DATE	BY
1	UPDATE CONNECTOR NAMES	1/21/2013	FD



UNTERMINATED

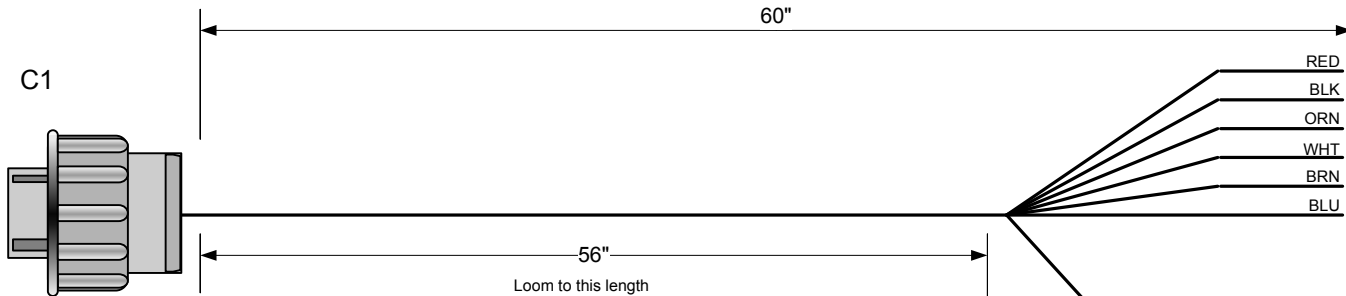
**CAN CONNECTOR FRONT VIEW**



RECEIVER MODULE CONNECTOR C1			
QTY	DESCRIPTION	P/N	NOTES
1	CONNECTOR	CON-0026	
4	TERMINAL	CON-0045	
3	BACK SHELL	CON-0001	

**P-411**

CAN CONNECTOR C2			
QTY	DESCRIPTION	P/N	NOTES
1	CONNECTOR	CON-5050	
2	TERMINALS	CON-5200	
1	BACK SHELL	CON-5100	



UNTERMINATED WIRES			
PIN	CIRCUIT FUNCTION	COLOR	CONNECTS TO
1	+12V	RED	
2	GND	BLK	
5	HORN IN	ORN	
6	HORN OUT	WHT	
7	DOWN SHIFT OUT	BRN	
8	UP SHIFT OUT	BLU	

RECEIVER MODULE CONNECTOR C1			
PIN	CIRCUIT FUNCTION	COLOR	CONNECTS TO
1	+12V	RED	
2	GND	BLK	
3	CAN HI	WHT\RED	
4	CAN LO	WHT\BLK	
5	HORN IN	ORN	
6	HORN OUT	WHT	

Print Date  
**4/3/2017**  
**1700**

CAN CONNECTOR C2			
PIN	CIRCUIT FUNCTION	COLOR	CONNECTS TO
1	CAN HI	WHT\RED	
2	CAN LOW	WHT\BLK	

FULL FILENAME  
 \PWR2950\PCS\_WORK\PCS PRODUCTS\PADDLE SHIFTER\HARNESS\PS-4000 PCS  
 CUSTOMER HARNESS\PS-4000 PADDLE SHIFTER CUST HARNESS 2011.VSD