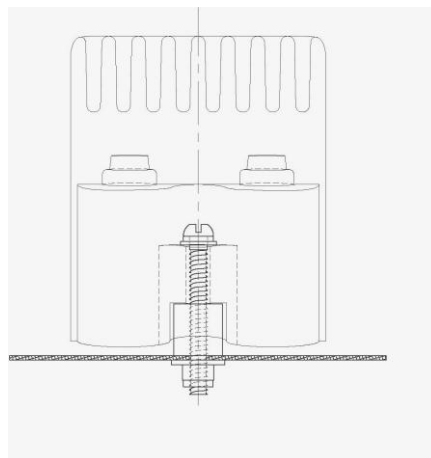
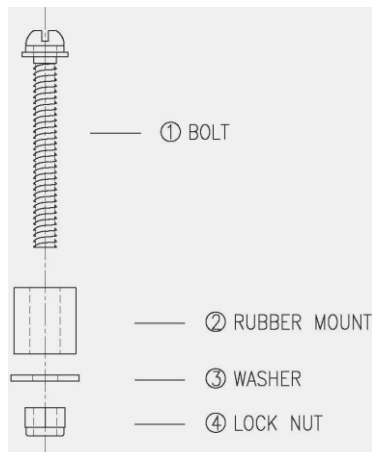


# Installation Instructions for CD Coil

## Part Number 4207

### **PARTS INCLUDED IN THIS PACKAGE:**

3 pcs.	Bolt – M4x32	2 pcs.	10/32 brass screws
3 pcs.	Rubber mounts	2 pcs.	#10 lock washers
3 pcs.	Washers	1 pc.	90 deg. Coil wire boot
3 pcs.	M4 lock nuts	1 pc.	90 deg. Coil wire terminal



### **MOUNTING THE COIL**

- ❖ Turn the ignition switch off and disconnect the battery negative cable.
- ❖ Remove the coil high tension wire from the coil tower.
- ❖ Label and remove all wires from the positive and negative coil terminals.
- ❖ Remove the existing coil.
- ❖ The coil can be mounted in many locations. Choose a flat area that is away from direct engine heat and is fairly close to the distributor. Common locations would include a fender well or firewall.
- ❖ Before you begin, make sure that the existing coil wire from the distributor and primary ignition wires reach the chosen mounting location.
- ❖ Hold the coil in position and mark the four mounting hole points with a pen or transfer punch.
- ❖ The coil comes with all the required hardware for mounting. Machine screws, lock nuts & washers and vibration mounts

- ❖ Before you begin drilling holes, check to be sure where you are drilling will not result in damage. Drill three holes in the marked locations using a 3/16" drill bit.

## **WIRING THE CD COIL**

1. Run the coil wire from the distributor to the coil. The coil wire should snap onto the coil terminal. If your coil wire does not have this kind of terminal end, replace it with the provided terminal and boot. (See Step #4)
2. Connect all of the wires that were removed from the negative terminal of the old coil to the negative terminal of your new coil.
3. Connect the wires that were removed from the positive coil terminal of the old coil to the positive terminal of the coil.
4. If the coil wire has a male style terminal, you will need to replace it with the provided female terminal.

### **To terminate the coil wire follow these steps:**

- ❖ Strip 3/4" of the insulation to expose the inner core.



- ❖ Fold the core of the wire over and onto the wire jacket being careful not to cut or damage the core



- ❖ Place the 90 deg. Coil terminal so that the folded core is up against the inside of the terminal. It sometimes easiest if this is done on a flat surface.



- ❖ Crimp the terminal into place with an ignition crimping tool. Apply a small amount of dielectric grease to the terminal. Spray the inside of the 90 deg coil boot with a silicone spray and slide it into place.

### **Final steps**

1. Check all connections that positive contact is made. Re-attach the battery.

Rev12911